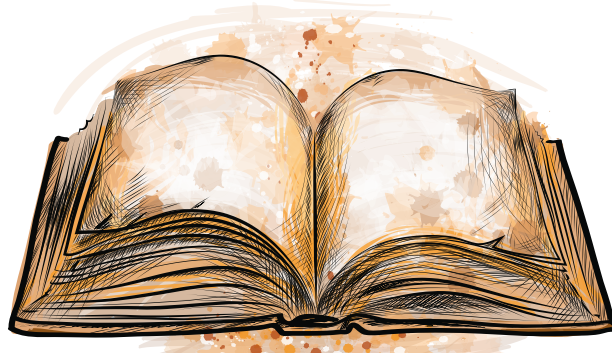


Camp Marin Sierra



2021 Unit & Parent Information - FAQs

While this list of questions is not all-encompassing, these are the top inquiries asked via email, telephone, or at leader orientations.

Also, these are among the most frequently misunderstood concepts or common errors.

Q: It's after June 1, can I add a leader or camper?

A: Yes, you can add Scouts or leaders at any time up to and including when you arrive in camp. You can find the fee structure on page 44 of the Leader Guide.

Q: Since the fee for new Scouts or newly-bridged Webelos is lower, can they still get the free t-shirt if they bridge into the troop in May?

A: No. Free t-shirts are only for those youth and adults that pay by April 1. However, you may pre-order and pay for t-shirts for other Scouts/leaders until June 1.

Q: Are camperships available for Scouts not in the Marin Council?

A: No. At this time, camperships are only available to Scouts registered in the Marin Council.

Q: How is check-in day run? How should we prepare?

A: Check-in for Saturday or Sunday is explained on pages 3–4 of the Leader Guide; please read this **in advance!** The check-in process takes **some** time, so try to **arrive** as close as possible to your assigned check in. The stations are (not necessarily in this order): (1) medical recheck, (2) swim check, (3) food services orientation, (4) rifle safety orientation, and (5) brief camp tour. These first five stations are shuffled to keep the **troop** orientations moving and not stacked up in one area. Scouts should have swimming suits on or readily available for swim checks. The last step will be to go to the campsite for set-up.

Q: What forms do we need at check-in time?

A: After a Scoutmaster and SPL check in with the business manager at Ibach Lodge and pay any fees that are due, a troop guide will take the troop to the above stations. All

forms are turned in at the medical station. These are: BSA Medical Forms, Minor Activity Release Forms, and Dietary Needs Forms. Dietary Needs Forms should also be faxed to us two weeks before coming to camp.

Q: Do we have to use the Marin Sierra Minor Activity Release Form or can we bring one that we have used at other camps/activities or is from our own council.

A: No. Sorry. We must have the Marin Sierra form with the signature and initials of at least one parent or guardian. Sometimes parents do not sign or send these forms with their troop. This is fine, except please understand that the Scout will not be cleared to do any of the activities on the form (all shooting sports, COPE, climbing, hikes out of camp, and so on) without this signed form.

Q: Can we use a sports medical form, Philmont medical form, or another form that is different from the standard BSA form.

A: Yes, but only if the information is the same as required on Part C of the BSA form. However, you still must fill out Parts A and B of the BSA form—which are the parts that do not require a physician's signature and exam—and attach the other form with Part C.

Q: Can we use any version of the BSA Annual Health & Medical form such as those printed in 2011?

A: No. The only form we will accept is the current 2019 version. BSA is constantly upgrading these forms, **so make sure your troop has the most current.** There is a link to the most current on our Scouts BSA Resident Camp page at www.boyscouts-marin.org or they can be found at www.scouting.org. For more about medical forms, see page 43 of the Leader Guide.

Q: I'm a leader, and I'm only staying for two nights, do I need a medical form?

A: Yes. If you are staying only one night, you can submit just Parts A and B. If you are staying longer than one night, then all 3 parts need to be completed.

Q: I have a personal firearm that I always carry with me. Can I keep it in my car?

A: No. All personal firearms must be checked in with the shooting sports director or any bows with the archery director. This is BSA policy and applies to everyone unless you are an on-duty law enforcement officer. However, you still need to notify the shooting sports director of the possession of the firearm and why you have it. See page 39 of the Leader Guide.

Q: How do your merit badge sign-ups work?

A: Please read Chapter 4 of the Leader Guide and particularly page 24. Merit badge sign-ups take place on Monday morning right after the morning assembly.

Q: I don't see a form in the Leader Guide for patrol rosters. Do you need them?

A: No. However, we need the numbers in each patrol. We want to pack out your jamboree food deliveries to fit the size of your patrols. You will submit those numbers upon check in using the Patrol Count Form on page 59 of the Leader Guide. We need this form whether you are week-long jamboree or central dining.

Q: If Scouts sign up for a class, do they just go to that class all day until they finish?

A: Our class schedule is horizontal. In other words, if a Scout signs up for the 10:00 a.m. Swimming merit badge class, he/she will attend that class every day at 10:00 for the period of time shown for the class. All scheduled classes are listed in the Leader Guide on page 11. Drop-ins, on the other hand, can be taken at any time during the day and for as long as the Scout wants to stay there working on them. We only ask that Scouts attempt to drop in on the half-hour so that the counselors don't have to keep restarting classes for late arrivals. A counselor may also ask a Scout to wait until the next session starts if the Scout is significantly past the half-hour.

Q: One of our leaders can only stay 3 nights, and another leader will do the other 3 nights. How do we pay for them?

A: This is fairly common, and Shared Leadership is covered on page 45 of the Leader Guide. If the total amount of nights that the 2 or 3 leaders will be staying is a full week, then you just pay for one leader for the week. If they are overlapping nights or just staying a couple of nights with nobody else the balance of the week, then the fee is \$50 per night.

Q: We have so much gear that we have to bring 2 full trucks and a trailer to camp. Can we just drive them into the campsite?

A: Vehicles in camp are covered on page 47 of the Leader Guide. One vehicle or one vehicle with a trailer can make one trip to the site if you have less than 30 total people. If you have more than 30, one more vehicle can make one trip. Basically, we are trying to keep the driving on the roads to a minimum to preserve the roads, avoid congestion, and keep people safe. Scouting best practices and our strong recommendation is that Scouts carry their own gear to camp (and possibly some troop gear). That way, the vehicle only needs to carry heavy or bulky items. There are some campsites that are inaccessible by vehicle or with trailers. If you have leaders arriving or leaving during the week, they may not drive to and from the campsite for their gear. Have Scouts or other leaders assist them.

Q: Can I just park in my campsite? It looks like there is plenty of room.

A: No. Vehicles are to remain the shortest amount of time in sites. This is just for unloading for about 30–45 minutes. Once unloaded, take vehicle back to parking lot to remain for the week. Vehicles parked on camp roads can cause congestion when other vehicles are trying to get to their campsites.

Q: What is the menu for jamboree day on Wednesday?

A: The menu is emailed out usually about one month before camp starts, i.e., in June. The menu is simple so that Scouts can learn but not be bogged down with cooking. A minimum amount of gear will be needed. See page 41 of the Leader Guide.

Q: Will we be able to have fires for enjoyment or for cooking?

A: Even though we have had quite a bit of rain and snow, it is too early to tell what the restrictions will be at this time. However, you will be notified prior to coming to camp on

what might be happening. Camp Marin Sierra follows the restrictions of the Tahoe National Forest. Safety and security are our primary concerns as we have witnessed some devastating fires in the last few years. Please be flexible and patient. See page 39 of the Leader Guide.

Q: I just collected the balance of funds needed for the early-bird payment. I know it's a day late, but can we still get the low rate?

A: Sorry, one day late or ten days late, it's the same. In order to be fair to everyone, we have to cut off the payment dates when shown. Payments must be in our hands or postmarked by the due date. Payment is not just filing the Troop Payment Form with us; it must include check or credit card. Most troops know the dates for months, so there is really no reason to be a day late.

Q: Is it ok if a family comes up to visit their Scout and stays the night?

A: Yes and no. Visitors are always welcome. If the people coming up are parents and have the approval of their troop, have the correct medical forms, and have or will pay for their meals or stay, then yes. However, we cannot accommodate family camping (sisters, brothers, relatives, pets). While families (without any pets) can visit for a short time, they cannot spend the night. See page 48 of the Leader Guide.

Q: I'm trying to organize my son's advancement program at camp. Can you tell me how the merit badge process works?

A: Yes. Call your Scoutmaster.

Q: I'm a leader with a Scout in the troop, and my other son is a Webelos. Can my younger son come with me to camp since he will be bridging into the troop next year?

A: No, sorry. BSA policy is that Cub Scouts and Webelos cannot attend Scouts BSA resident camp except possibly to visit for a day with their family.

Q: Do all adults staying overnight in camp need to be registered with the BSA.

A: New as of June 2018, all adults camping at a resident camp more than 72 hours must be currently registered members of the BSA, have gone through criminal background checks, and have completed Youth Protection training within the last 2 years. The new requirement applies to any adult accompanying a Scouts BSA group on a single Scouting activity where they are present for three or more nights (not necessarily consecutive). Criminal background checks cannot be expedited, so do not wait until the last minute to register.

Q: Can my second adult leader be 18 years old?

A: Recently, the second adult requirement has changed for outings. While 18-year-olds can be on outings as adults, they cannot be the second-required adult. Both primary adults must be registered adults over 21. If it is a female troop, one adult must be female.



For further information and all Summer Camp forms, go to
www.boyscouts-marin.org.

In the headers menu, click on the dropdown selections:
Camping & Facilities > Scouts BSA Summer Camp > General Information & Forms.
